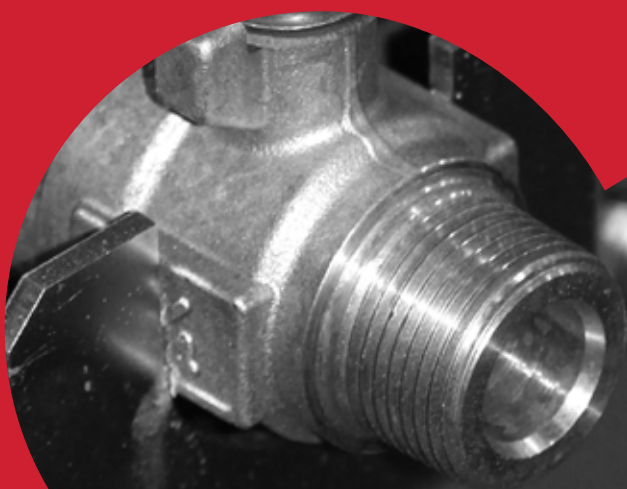


# PORTABLE DIESEL AIR COMPRESSORS UP TO 400CFM

AIRMAN



COMPLETE AIR  
& POWER SOLUTIONS



# CAPS AUSTRALIA COMPLETE AIR & POWER SOLUTIONS

CAPS Australia is a privately owned and proud Australian company intent on remaining at the forefront of compressed air, gas and power generation solutions.

## WHO IS CAPS AUSTRALIA?

- Over **40 years of experience** in the Australian market.
- **10 branches** reach right around the country with **over 160 employees**.
- **60 service technicians** covering the full national footprint with a **24/7 service** offering.
- A vast inventory of **spare parts**.
- An **independent company** with the flexibility to search globally for the best products and technologies that best serve the **Australian market's needs**.
- CAPS has world-renowned partner brands such as Ingersoll Rand, Kohler, AIRMAN, Sauer, Pedro Gil, Next Turbo Technologies, Lamson and many more.
- **Custom design, manufacturing, supply and service**
- ISO 9001 accredited facilities

## WHO DO WE SERVE?

- Mining
- Manufacturing
- Food and beverage
- Public and private utilities
- Waste and water treatment plants
- Oil and gas
- And much more throughout Australia and internationally, having exported turn-key packages to over 35 countries.



*"At CAPS, we think outside the box to develop integrated, agile solutions that are designed around the specific need of our customers."*



A family  
owned  
Australian  
business

# AIRMAN BOX TYPE AN AUSTRALIAN FAVOURITE



AIRMAN box type compressors have been specifically designed for heavy duty outdoor work. They are ideal for mounting on trucks, utilities and trailers. They can also be craned or even helicoptered to the job site.

A long reputation for durability and reliability has made AIRMAN the top selling box style diesel compressor in Australia. When there is important work to be done, more Australian companies depend on an AIRMAN box type compressor from CAPS than any other brand.





# AIRMAN BOX TYPE AN AUSTRALIAN FAVOURITE

10,000 HOURS  
OR 7 YEAR  
WARRANTY

## FEATURES

### HERE'S WHY AIRMAN ARE #1 FOR BOX STYLE DIESEL COMPRESSORS

- Easy to operate with clear operating instructions
- Strong & durable lockable cabinets
- Larger low speed airends producing more air
- Super low noise levels
- Typically larger fuel tanks for longer run times
- Lockable fuel doors or filler caps
- Auto bleed electric fuel pump for easy starting
- External drain points for hassle free fluid changes
- Wide opening doors for easy service access
- Genuine Japanese quality fuel efficient engines
- Over 40 years of research and development
- Japanese ISO 9001 quality assured factory
- Widest range of models and options to choose from
- High re-sale value

**1 year / 1,500 hour manufacturer's warranty plus six year / 8,500 hour (whichever occurs first) warranty by CAPS for the compression air end when continuously serviced at the recommended intervals with compressor fluid and filters supplied by CAPS.**



### AUSTRALIAN CERTIFIED TRAILERS

All box units can also be supplied on a trailer which creates one of the biggest ranges of towable compressors available anywhere in Australia



## FINANCE

### FLEXIBLE FINANCE OPTIONS

Having the right equipment and assets is crucial for the growth of any business. Through our trusted partner, we not only provide short and long-term funding for your equipment, but can tailor our finance to suit your specific budget or requirements.

The best equipment does not have to be out of reach - explore CAPS range of finance options to drive your business forward.

# WE ADAPT OUR PRODUCTS ACCORDING TO YOUR NEEDS



MINING APPLICATION  
IN EXTREME  
WEATHER CONDITIONS

MOBILE TO ADAPT  
TO CONSTRUCTION'S  
DEMAND



COMPACT DESIGN  
TO FIT SERVICE  
TRUCKS

EASILY UTE MOUNTED  
FOR COMPRESSED AIR  
ANYWHERE



CAPS FULLY SUPPORT EVERYTHING WE SELL WITH OUR LOCAL SERVICE AND PARTS TEAMS.

# STANDARD PRESSURE



## NEW LEAK GUARD MODELS

Leak Guard models are equipped with a factory built integrated bund to protect the environment from fluid leakages. An alarm is displayed on the controller when the containment tank is 1/3 full.

Aftercooler equipped Leak Guard models also have a fully contained condensate storage tank. CAPS can fit locally fitted bunds to all other models.



Model		PDS65L-5C5	PDS80S-5C5	PDS80L-5C5	PDS100S-5C5	PDS100L-5C5
Aftercooled Model		PDS65LC-5C5	PDS80SC-5C5	PDS80LC-5C5	PDS100SC-5C5	PDS100LC-5C5
Configuration		Leak Guard		Leak Guard		Leak Guard
Specifications		UOM				
Free Air Delivery	m <sup>3</sup> /min (cfm)	1.84 (65)	2.3 (80)	2.3 (80)	2.8 (100)	2.8 (100)
Working Pressure	kPa (psi)	700 (100)	700 (100)	700 (100)	700 (100)	700 (100)
Max. Working Pressure	kPa (psi)	825 (120)	825 (120)	825 (120)	825 (120)	825 (120)
Engine						
Make		Kubota				
Model		D722-K3A	D902-K3A		D1105-K3B	
Type		4 cycle water cooled, swirl chamber				
No. of Cylinders		3				
Displacement	cc	719	898		1,123	
Output	PS(kW)/rpm	19.2 (14.1)/3,600	23.1 (17)/3,600	23.1 (17)/3,600	26.1 (19.2)/3,400	26.1 (19.2)/3,400
Fuel		Diesel/Biofuel B5				
Fuel Tank Capacity (l)		18	25	33	28	33
Battery		12V				
Dimensions						
Length	mm	1,300	1,500	1,520	1,580	1,625
Width	mm	700	770	770	770	800
Height	mm	800	865	880	900	905
Net Dry Weight (A/C)	kg	310 (315)	400 (405)	420 (430)	460 (470)	515 (525)
Operating Weight (A/C)	kg	340 (345)	435 (440)	460 (470)	500 (510)	555 (565)
Air Outlets	(M) Male (F) Female	1 x 3/4" (M) 1x3/8 fitting	2 x 3/4" (M)			
Noise Level						
Noise Level	dB(A) @7m	67	66	67	67	67



Model		PDS130S-5C3	PDS185S-5C5	PDS265S-5C3	
Aftercooled Model		PDS130SC-5C3	PDS185SC-5C5	PDS265SC-5C3	PDS390SC-5C1
Specifications		UOM			
Free Air Delivery	m <sup>3</sup> /min (cfm)	3.7 (130)	5.2 (185)	7.5 (265)	11.0 (390)
Working Pressure	kPa (psi)	700 (100)	700 (100)	700 (100)	700 (100)
Max. Working Pressure	kPa (psi)	825 (120)	825 (120)	825 (120)	825 (120)
Engine					
Make		Yanmar		Yanmar	Isuzu
Model		3TNV88-BDHK	4TNV88-BXDHKSR	KDP-4TNV98T	CI-4JJ1X
Type		Direct Injection		Direct-Injection, Turbo-Charged	Direct-Injection, Turbo-Charged, Intercooled
No. of Cylinders		3	4	4	4
Displacement	cc	1,642	2,189	3,319	2,999
Output	PS(kW) / rpm	36.5 (26.9)/3,000	47.5 (34.9)/3000	83.2 (61.2)/2,500	114.8 (84.4)/2,200
Fuel		Diesel/Biofuel B5			
Fuel Tank Capacity (l)		70	90	115	180
Battery		12V			24V
Dimensions					
Length	mm	1700	1,970	2,050	2,680
Width	mm	890	950	1,200	1,300
Height	mm	1080	1,080	1,250	1,400
Net Dry Weight (A/C)	kg	640 (650)	755 (765)	1,150 (1,180)	1,700 (1,740)
Operating Weight (A/C)	kg	720 (730)	850 (860)	1,290 (1,320)	1,910 (1,950)
Air Outlets	(M) Male (F) Female	2 x 3/4" (M)	3 x 3/4" (M)	1 x 2" (F), 4 x 3/4" (M)	
Noise Level					
Noise Level	dB(A) @7m	66	68	69	70

# HIGH PRESSURE



Model		PDSF80S-5C5	PDSF100S-5C3	PDSF140S-5C3	PDSF210S-5C3	
Aftercooled Model			PDSF100SC-5C3	PDSF140SC-5C3	PDSF210SC-5C3	PDSG290LVRC-5C5
Configuration						Leak Guard
Specifications	UOM					
Free Air Delivery	m <sup>3</sup> /min (cfm)	2.3 (80)	2.8 (100)	4 (140)	6.0 (210)	9.6 (340) @700kPa 9.3 (330) @1,030kPa 8.2 (290) @1,400kPa
Working Pressure	kPa (psi)	960 (140)	1,035 (150)	1,035 (150)	1,035 (150)	600 (87) to 1,400 (203)
Max. Working Pressure	kPa (psi)	960 (140)	1,035 (150)	1,035 (150)	1,035 (150)	Variable Ratings
Engine						
Make		Kubota		Yanmar		Kubota
Model		D1105-K3B	3TNV88-BDHK	4TNV88-BX-DHKSR	4TNV98T-NHK	V3800DI-TI-TE3B-HE-2
Type		4 cycle water cooled, swirl chamber	Direct-Injection		Direct-Injection, Turbo-Charged	Direct-Injection, Turbo-Charged, Intercooled
No. of Cylinders		3		4	4	4
Displacement	cc	1,123	1,642	2,189	3,318	3,769
Output	PS(kW) / rpm	26.1(19.2)/3,400	36.6(26.9)/3,000	47.5(34.9)/3,000	83.2(61.2)/2,500	107.8 (79.3)/2,600
Fuel		Diesel/Biofuel B5				
Fuel Tank Capacity (l)		28	70	90	115	177
Battery		12V				
Dimensions						
Length	mm	1,550	1,700	1,970	2,050	2,600
Width	mm	770	890	950	1,200	1,300
Height	mm	900	1,080	1,080	1,310	1,300
Net Dry Weight (A/C)	kg	460	640 (650)	740 (750)	1,150 (1,170)	1,610
Operatin Weight (A/C)	kg	500	720 (730)	840 (850)	1,290 (1,310)	1810
Air Outlets		2 x 3/4" (M)	2 x 3/4" (M)	3 x 3/4" (M)	1 x 2" (F), 4 x 3/4" (M)	1 x 2" (F), 2 x 3/4" (M)
Noise Level						
Noise Level	dB(A) @7m	67	65	65	69	70



# CUSTOM OPTIONS

CAPS has its own ISO 9001 certified manufacturing facility that can modify a compressor to suit your needs. Even the toughest mine site specifications can be met. Below are a number of custom modifications that can be applied to your AIRMAN compressor.



1. HIGH DUST FILTRATION (EXT. AND INT.)
2. BATTERY JUMP START
3. FIRE EXTINGUISHER/FIRE SUPPRESSION
4. SAFETY RELEASE RADIATOR CAPS
5. CUSTOM GRAPHICS/SAFETY LABELS
6. AFTERCOOLER AND WATER SEPARATOR
7. ENVIRONMENTAL CONTAINMENT BASES
8. EXHAUST LAGGING
9. LOCKABLE BATTERY ISOLATOR
10. EMERGENCY STOP BUTTON
11. EXHAUST SPARK ARRESTOR
12. REMOTE START/STOP PENDENT

## ACCESSORIES

- Hoses & Hose Reels
- Safety Couplings
- Claw Couplings
- Safety Fuses
- Lubricators
- Air Treatment
- Safety Whip Checks
- Air Distribution Manifolds
- Filtration Equipment

## TOOLS

- Paving Breakers + Rock Drills
- Impact Wrenches
- Chipping Hammers
- Rivet Busters
- Air Grinders, Scabblers + Scrapers
- Air Drills + Saws
- Double Diaphragm Pumps
- Rammers + Tampers
- Air Hoists + Winches

# TOWABLE PORTABLE DIESEL COMPRESSORS



The towable AIRMAN box compressor package has been exclusively designed for the Australian market.

The trailer parts are made and assembled here in Australia, giving you piece of mind they comply with all local standards.

These versatile units combine an extensive list of features with the mobility needed to get the job done!

# TRAILER MOUNTED AIRMAN DESIGNED FOR AUSTRALIA

## FEATURES

- Full instrumentation - Comprehensive control panel with easy to read diagnostics.
- Auto shutdown on high engine coolant, low engine oil pressure, high air discharge temperature.
- Large efficient airends and generous fuel tank capacities keep you working longer (up to 50% larger).
- Powder coated corrosion-resistant enclosures with ergonomic, one-hand operation access doors, provide safe and easy access to all service areas of the compressor.
- Doors and control panel are fully lockable.
- Dual voltage LED tail lights are fitted so that any suitable vehicle can tow the compressor.
- Locally manufactured trailer components are used to ensure Airman compressors comply with local regulations.
- Rigid A-Frame draw bars, jockey wheel, inertia operated brakes and a hand brake are standard on all models.
- Genuine Japanese quality fuel efficient engines
- Over 40 years of research and development
- Japanese ISO 9001 quality assured factory
- High re-sale value

**10,000 HOURS  
OR 7 YEAR  
WARRANTY**

**1 year / 1,500 hour manufacturer's warranty plus six year / 8,500 hour (whichever occurs first) warranty by CAPS for the compression air end when continuously serviced at the recommended intervals with compressor fluid and filters supplied by CAPS.**



# AIRMAN TOWABLE



## TOW YOUR AIR ANYWHERE

Airmann wide track portable compressors provide superior road towing, stability and maneuverability. Many towable compressors are designed for European narrow roads, which can make them harder to tow and difficult to reverse. CAPS design, manufacture and fit the trailer under carriages locally, to ensure suitability for Australia's harsh road conditions and compliance with road regulations.

Model		PDS185S-6C2-T	PDS265S-5C3-T	PDS375DP-6B5-T	PDS400S-6B5-T
Aftercooled Model		PDS185SC-6C2-T	PDS265SC-5C3-T	PDS375DPC-6B5-T	PDS400SC-6B5-T
Configuration		Trailer mounted		Trailer / Dual Pressure	Trailer mounted
Specifications		UOM			
Free Air Delivery	m <sup>3</sup> /min (cfm)	5.2 (185)	7.5 (265)	10.7 (375)/9.3 (330)	11.3 (400)
Working Pressure	kPa (psi)	700 (100)	700 (100)	700 (100) /1030 (150)	700 (100)
Max. Working Pressure	kPa (psi)	825 (120)	825 (120)	1,030 (150)	825 (120)
Engine					
Make		Yanmar		Kubota	Kubota
Model		4TNV88-BXDHKS	KDP-4TNV98T	V3800DI-TI-E2B-COHE1	V3800DI-TI-E2B-COHE1
Type		Direct-Injection	Direct Injection, Turbo Charged	Direct-Injection, Turbo-Charged, Intercooled	
No. of Cylinders		4			
Displacement	cc	2,189	3,319	3,769	3,769
Output	PS (kW)/rpm	49.5 (36.4)/3,000	83.2 (61.2)/2,500	102.2 (75.2)/2,600	102.2 (75.2)/2,600
Fuel		Diesel/Biofuel B5			
Fuel Tank Capacity (l)		90	115	178	178
Battery		12V			
Dimensions					
Length	mm	3,000	4,240	3,700	3,700
Width	mm	1,700	2,100	1,975	1,975
Height	mm	1,490	1,170	1,770	1,770
Net Dry Weight	kg	954 (962)	1,622 (1,662)	1,770 (1,810)	1,770 (1,810)
Operating Weight	kg	1,025 (1039)	1,718 (1,758)	1,920 (1,960)	1,920 (1,960)
Air Outlets	(M) Male (F) Female	3/4" M x 2	3/4" M x 4, 2" F x 1	3/4" M x 2, 2" F x 1	3/4" M x 2, 2" F x 1
Noise Level					
Noise Level	dB(A) @7m	69	69	69	71

Specifications subject to change without notice.



# CUSTOM OPTIONS

CAPS has its own ISO9001 certified manufacturing facility that can modify any compressor to suit your needs. Even the toughest mine site specifications can be met. Below are a number of custom modifications that can be applied to your Airman compressor.



1. HIGH DUST FILTRATION (EXT. AND INT.)
2. BATTERY JUMP START
3. FIRE EXTINGUISHER/FIRE SUPPRESSION
4. SAFETY RELEASE RADIATOR CAPS
5. CUSTOM GRAPHICS/SAFETY LABELS
6. AFTERCOOLER AND WATER SEPARATOR
7. ENVIRONMENTAL CONTAINMENT BASES
8. EXHAUST LAGGING
9. LOCKABLE BATTERY ISOLATOR
10. EMERGENCY STOP BUTTON
11. EXHAUST SPARK ARRESTOR
12. LANDCRUISER WHEELS AND SPARE WHEELS

## ACCESSORIES

- Hoses & Hose Reels
- Safety Couplings
- Claw Couplings
- Safety Fuses
- Lubricators
- Air Treatment
- Safety Whip Checks
- Air Distribution Manifolds
- Filtration Equipment

# 24/7 RAPID RESPONSE NATIONWIDE SUPPORT

## 10 BRANCHES SERVICING ALL AUSTRALIA



### AUSTRALIA WIDE

With our extensive network of branches and regional service locations, CAPS can service anywhere in Australia.

From the metro area through to a remote mine-site, we have you covered with experts located all around Australia.

### SPARE PARTS

A complete range of spare parts and accessories to help you get the most out of your industrial equipment.



### HIGHLY TRAINED TECHNICIANS

Enjoy the peace of mind of having an expert at your doorstep. **Their knowledge is continually updated**, and they have the model by model knowledge to fix your generator first time, every time.

Whether you have one generator or have complex systems with multiple pieces of equipment, **our technicians will give you the advice you need to ensure continuous operation.**

### PREVENTATIVE MAINTENANCE

We're always aiming to help you to **reduce operating costs and interruptions to your production.** Our factory-authorised programs include routine inspections, condition monitoring and the use of sophisticated diagnostic equipment to identify any potential problems before they impact you.

### SAFETY COMPLIANCE

Safety is a core value of CAPS and our goal is never to put people, plant or the environment at risk. You can be confident that our technicians will be **completely compliant to any site specific safety requirements** you have.

## NATIONAL HIRE

### LONG TERM AND SHORT TERM HIRE AVAILABLE

At CAPS, we have a large range of equipment that's suitable for every kind of project.

CAPS check their equipment before every hire to ensure the highest standard of safety and service. When you hire through CAPS you are speaking to experts who can assist you with selecting the right equipment for the job every time.



Hire and you protect your staff, control your costs, avoid depreciation, maintenance and borrowing expenses.

# CORE PRODUCTS

## AIR COMPRESSORS

ROTARY SCREW



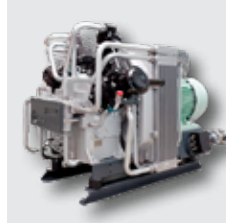
PORTABLE DIESEL



OIL FREE



HIGH PRESS. RECIPS.



SMALL RECIPS.



## AIR BLOWERS

ROTARY LOBE

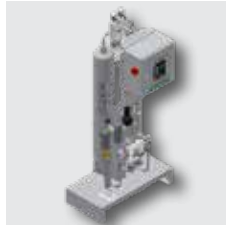


CENTRIFUGAL



## GAS GENERATORS & COMPRESSORS

NITROGEN



OXYGEN



OTHER GASES



## AIR TREATMENT

AIR DRYERS



AIR RECEIVERS



FILTRATION



## TOOLS & MATERIAL HANDLING

TORQUE CONTROL



WINCHES & HOISTS



## POWER GENERATION & RENEWABLES

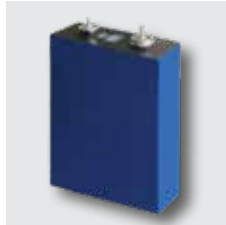
STANDBY



PRIME



BATTERY STORAGE



SOLAR



# ONLINE SHOPPING

[CAPSSHOP.COM.AU](http://CAPSSHOP.COM.AU)

If you are looking for spare parts or tools for your air and power equipment, visit our online shop.



# SOLVING YOUR AIR AND POWER CHALLENGES

## PORTABLE DIESEL AIR COMPRESSORS

**Inquiries:** 1800 800 878

**Service & 24/7 Support:** 1800 802 697

**Website:** [caps.com.au](http://caps.com.au)

**Shop:** [capsshop.com.au](http://capsshop.com.au)

**Email:** [info@caps.com.au](mailto:info@caps.com.au)

### BRANCH LOCATIONS

PERTH (HEAD OFFICE) | ADELAIDE | BRISBANE | DARWIN | KALGOORLIE | LAUNCESTON  
MACKAY | MELBOURNE | NEWCASTLE | SYDNEY

### INTERNATIONAL

MALAYSIA | GHANA



© CAPS AUSTRALIA PTY LTD. ALL RIGHTS RESERVED.

